

ASRP and CNW Habitat Connectivity in SW WA

Adrian Owens
James Blacklaw
Brian Stewart



The Chehalis Basin



ASRP: Aquatic Species Restoration Plan

Key components of the Department of Ecology's Office of the Chehalis Basin

Goal: Restore Aquatic Habitat and Flood Mitigation



Amphibians



Salmonids



Native & Non-native Fish



Mammals, Birds, & Other Wildlife



Removal of Invasive Spp.

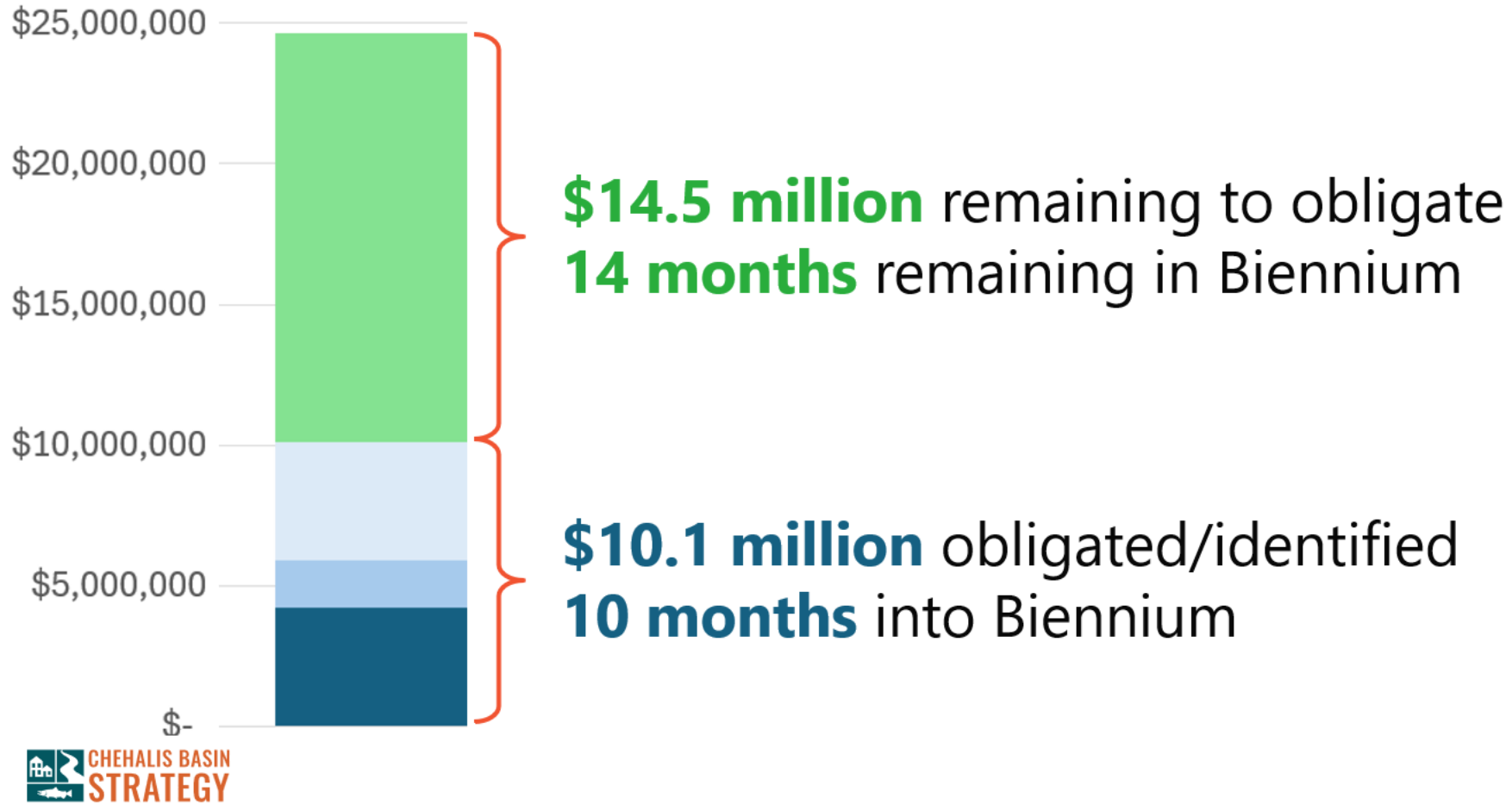


Planting Native Spp.

Restoration Actions

- Place Large Wood
- Remove Fish Barriers
- Reconnect/Restore Floodplain
- Riparian Restoration
- Beaver Ponds/Dam Analogs
- Wetland Restoration

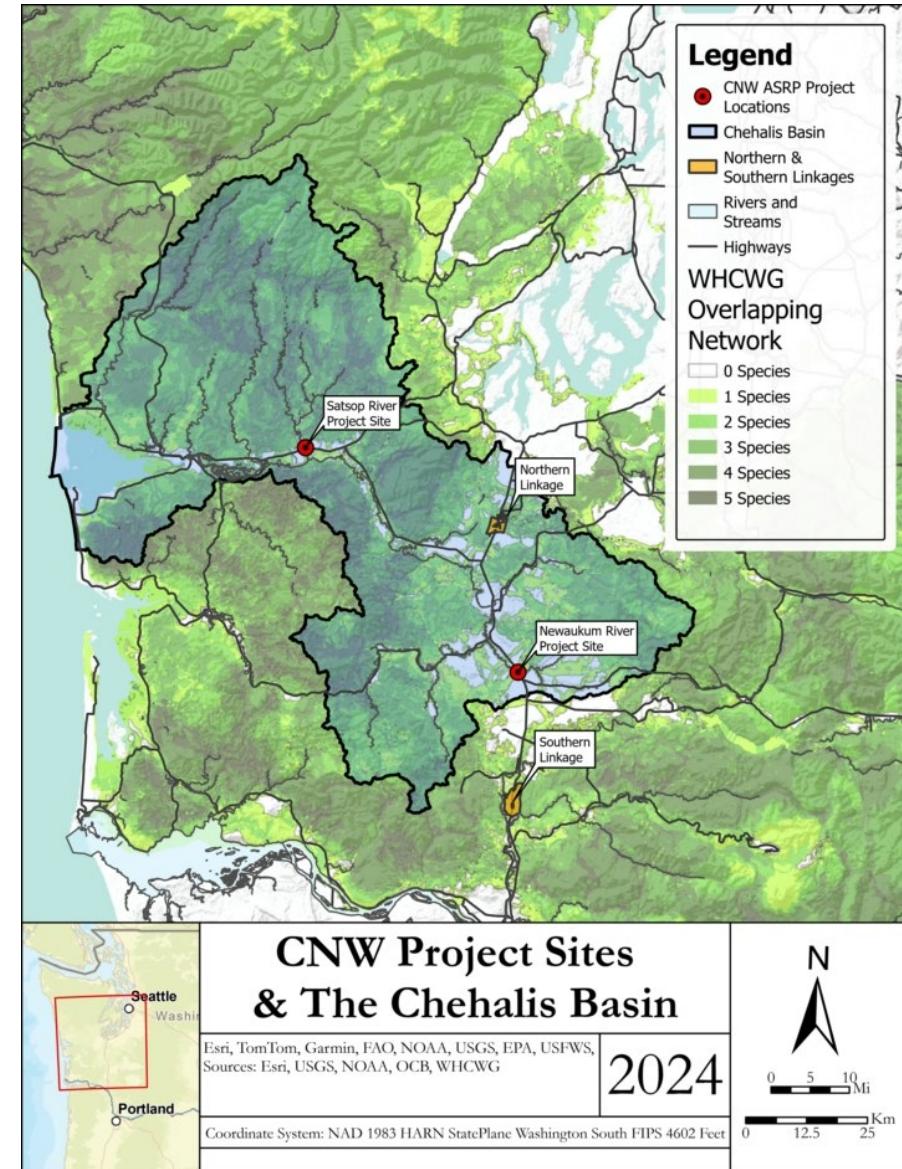
ASRP IMPLEMENTATION BUDGET STATUS- MAY 2024

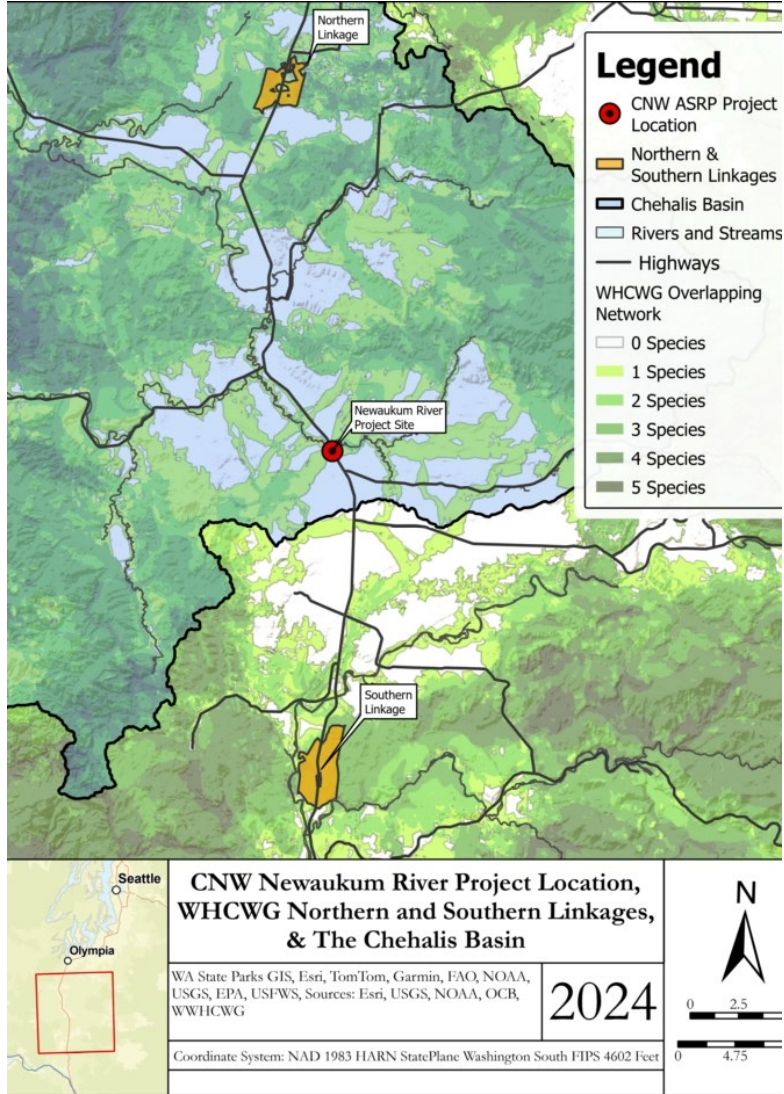


The Chehalis Basin with WHCWG Overlapping Network

Washington Wildlife Habitat Connectivity Working Group Focal Species (WHCWG, 2022, p. 7, 11)

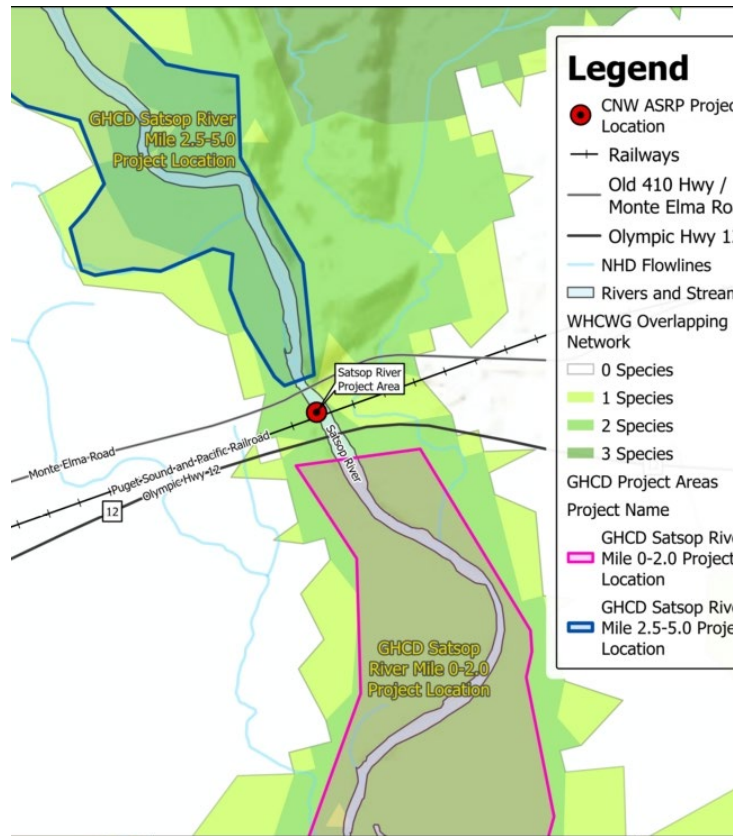
- Cougar (*Puma concolor*), selected as a generalist species that use a variety of habitats.
- Western gray squirrel (*Sciurus griseus*), selected to represent species using grassland, prairie, and oak woodland habitats.
- Mountain beaver (*Aplodontia rufa*), selected to represent early-stage Coastal Forests.
- Pacific fisher (*Pekania pennanti*), selected to represent late seral stage Coastal Forests.
- American beaver (*Castor canadensis*), selected to represent Riparian and Wetland habitats.
- Landscape Integrity, selected to represent areas with low human impact.





Newaukum
River at I-5

CNW ASRP
Project
Location



Overlapping Priorities: ASRP and Wildlife Habitat Connectivity

Satsop River at Highway 12

	CNW & Grays Harbor CD Satsop River Project Locations		
	<small>WA State Parks GIS, Esri, TomTom, Garmin, FAO, NOAA, USGS, EPA, USFWS, Sources: Esri, USGS, NOAA, OCB, GHCD, WWHCWG</small>	2024	
<small>Coordinate System: NAD 1983 HARN StatePlane Washington South FIPS 4602 Feet</small>			<small>0 0.23</small>

Climate Resiliency

- Natural migration routes
- Two in one approach
- Connectivity is diversity



Community Outreach and Engagement

- Identifying project opportunities and aligning them with community goals
- Multi-benefit approach



A scenic landscape featuring a wide river flowing through a forested area. The trees on the left bank are in autumn, with yellow and orange leaves. The river is dark blue, and a person in a blue inflatable boat is visible in the lower center. A dog is swimming in the water to the right of the boat. The right bank is a rocky, light-colored shore. The sky is blue with some clouds, and a faint rainbow is visible in the upper left. The word "Questions?" is overlaid in white text in the center of the image.

Questions?