

Connecting Habitat for Washington's Wildlife

Developing the Washington Habitat Connectivity Action Plan



Washington
Department of
**FISH and
WILDLIFE**

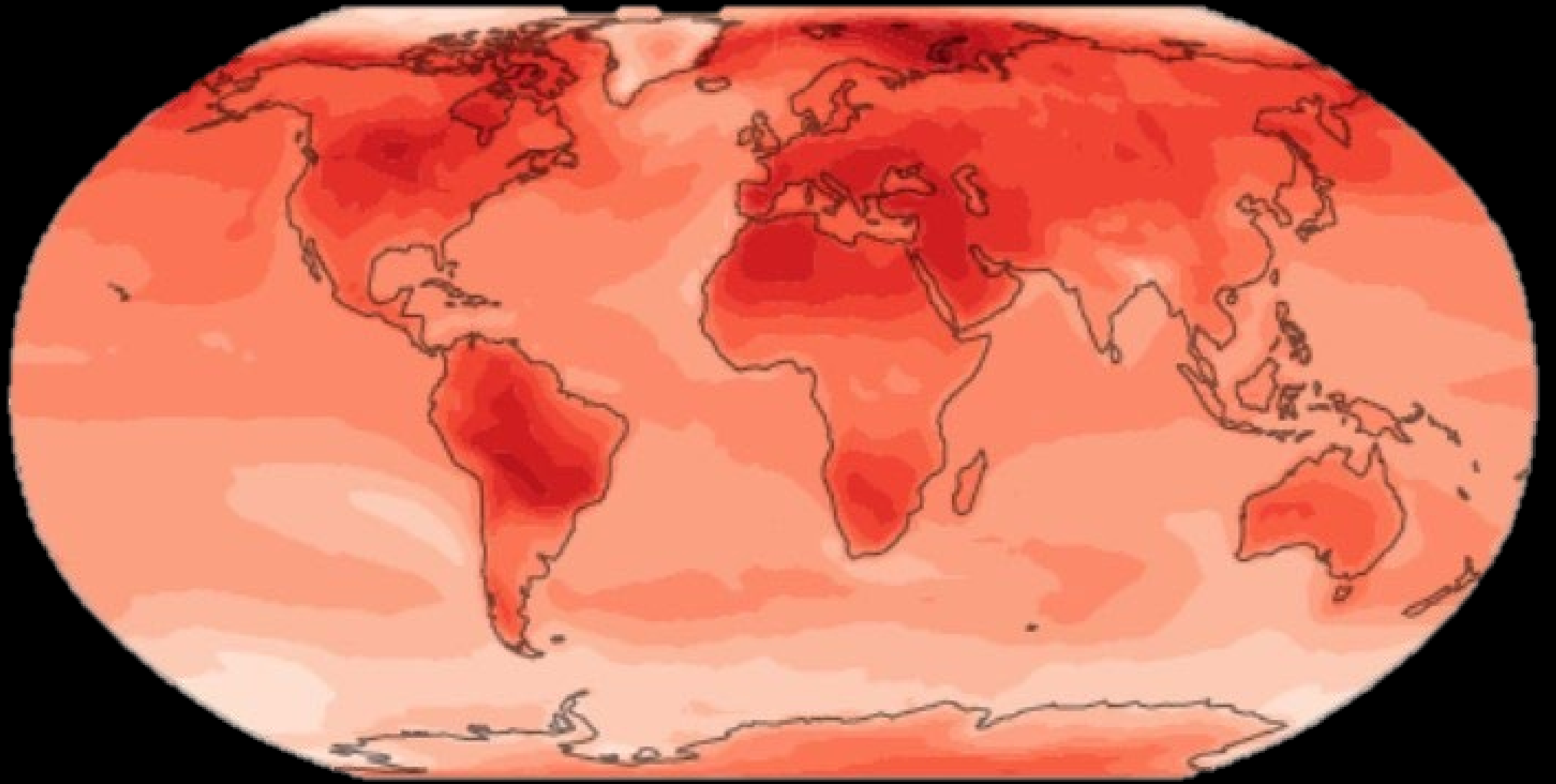


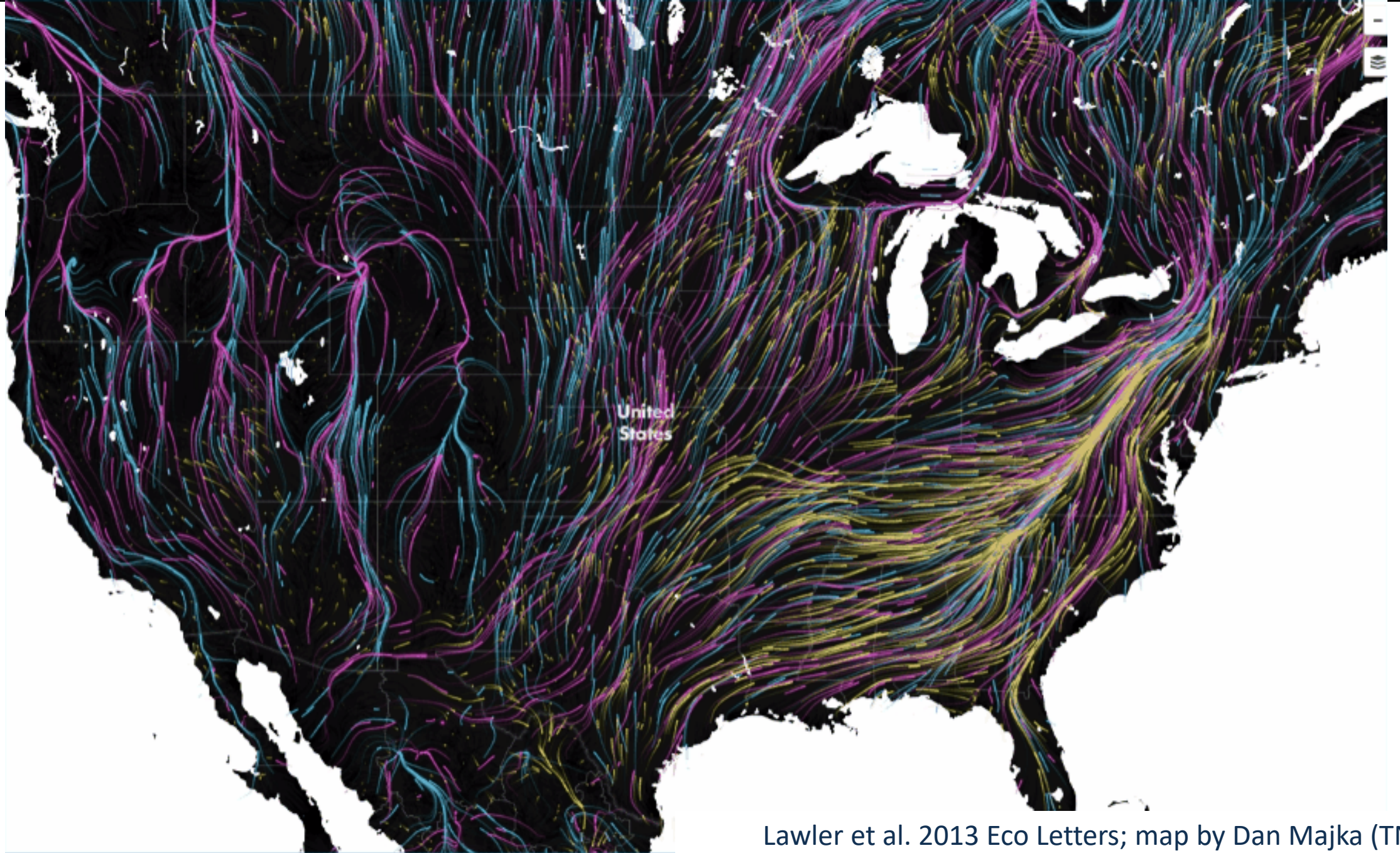
The Wildlife
Connectivity
Institute





Habitat connectivity is the degree to which the landscape facilitates or impedes wildlife movement across the landscape





Lawler et al. 2013 Eco Letters; map by Dan Majka (TNC)



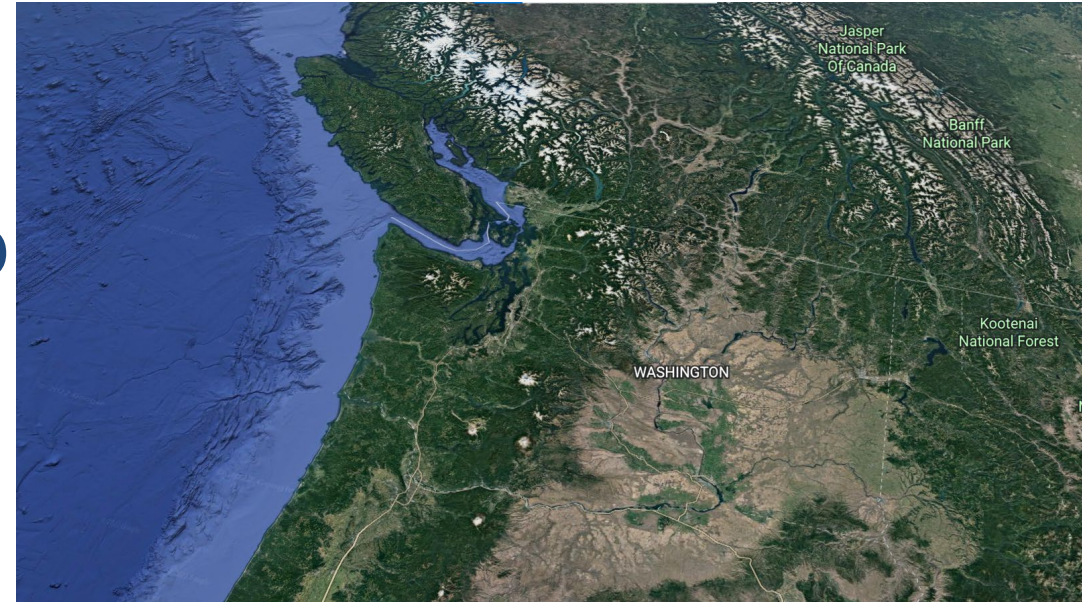
Providing spatial data and technical assistance to help planners *designate* and *protect* critical fish and wildlife habitat including

Biodiversity Areas and Corridors



Washington Habitat Connectivity Action Plan

Collaborative partnership to prioritize places and projects to protect and enhance habitat connectivity statewide.



Guiding principles

Build from what we have.

Support and amplify existing connectivity work.

Focus on action not analysis.

Both road crossings and landscape connectivity

Focus on terrestrial connectivity



State Connectivity Action Plans

Maps showing *where* connectivity is.

Priorities for taking action.

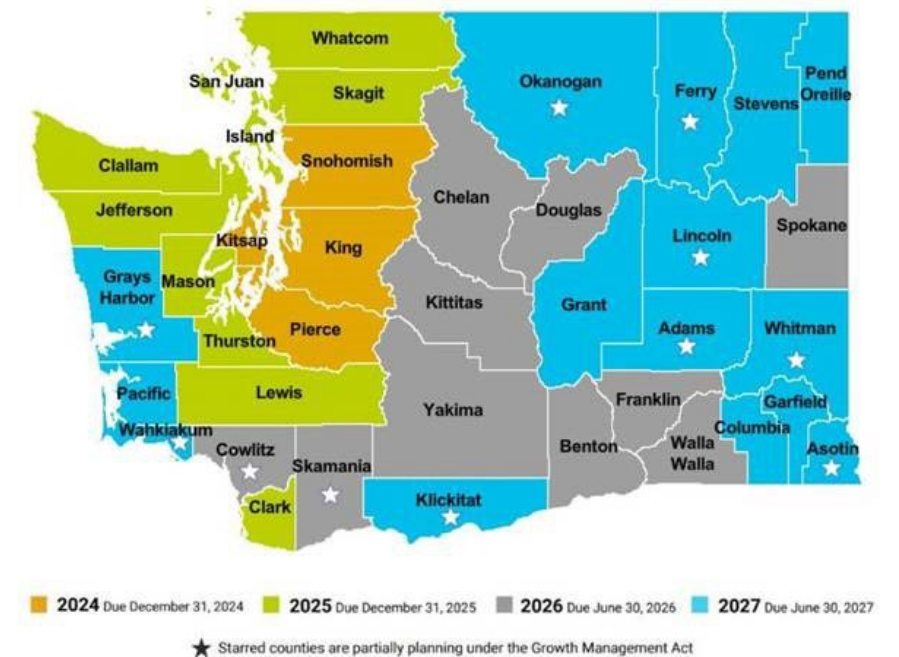
Strategies for coordinated *implementation*.



Immediate implementation priorities

Successfully apply for federal transportation grants for road crossing structures.

Inform periodic update for comprehensive plans and critical areas.



2023-25 Biennium funding

- Washington Habitat Connectivity Action Plan WACAP (Patty Cramer and Jessica Schafer)
- Spatial synthesis of existing connectivity data (CBI)
- Ecosystem connectivity models (TerrAdapt)

Collaborative Process

Technical Advisory Group

- Ecosystem model development
- Which species/ecosystems
- Data review and curation
- How to combine/weight data





Technical Advisory
Group (TAG)

5 Ecosystems

- Temperate Forest
- Montane Mesic Forest
- Montane Xeric Forest
- Shrubsteppe
- Wetlands and Riparian?



Draft results June 30,
2024Technical Advisory
Group (TAG)

Benefits of new ecosystem-based models

- Coarse filter approach
- Current data
- Refine models to meet users needs
- Google earth engine updates





Ecosystem-based models

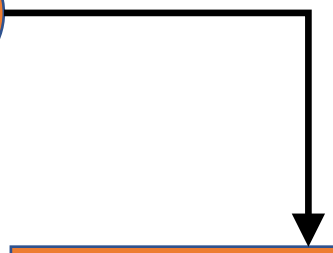
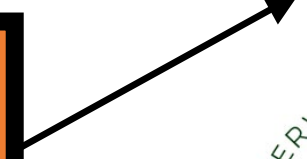
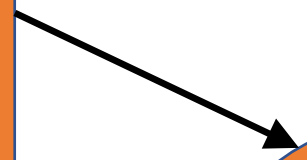
Technical Advisory Group (TAG)

Existing data

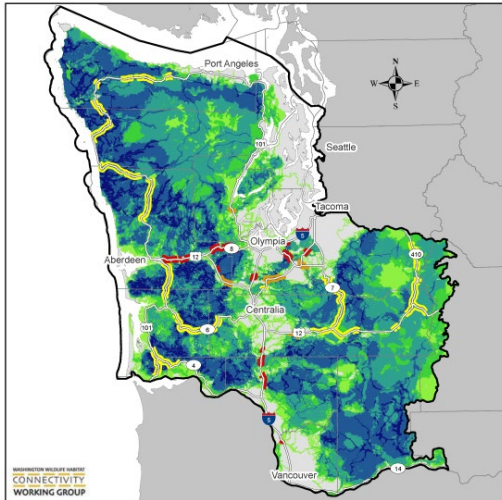


Synthesis

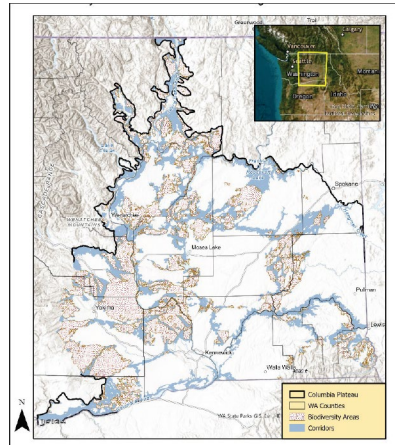
Synthesis map and/or tool



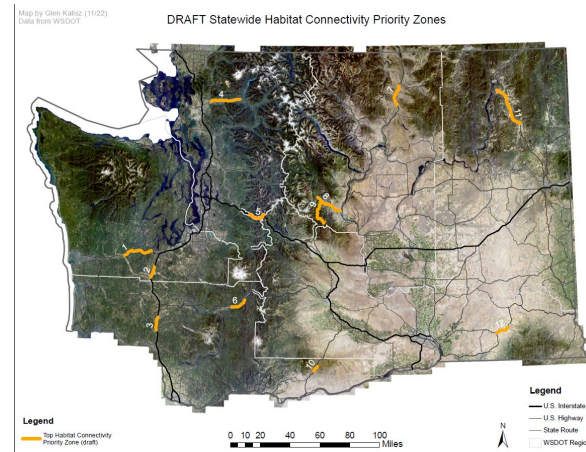
National, state, and regional data and prioritizations



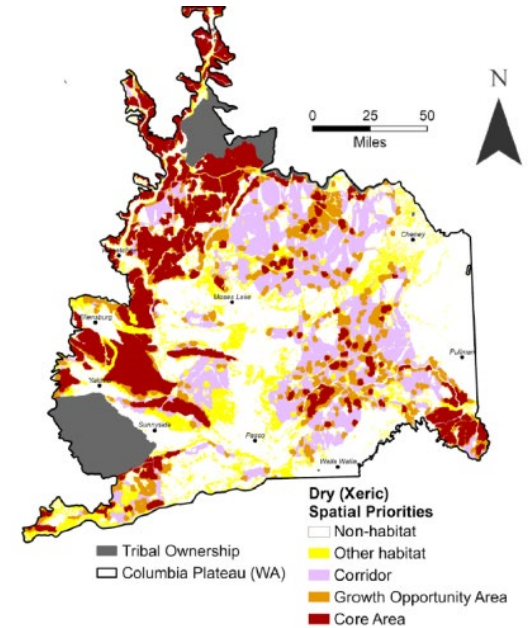
SW Cascades to Coast
Washington Wildlife
Habitat Connectivity
Working Group



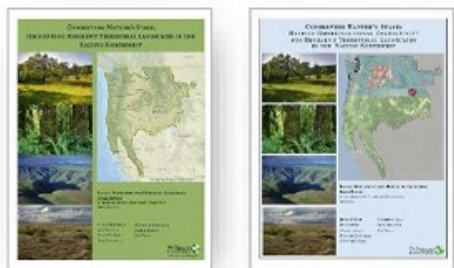
PHS Biodiversity Areas
and Corridors



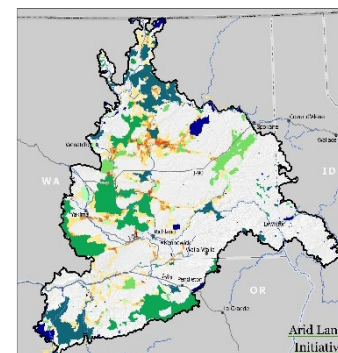
WSDOT road crossing
priorities



Washington Shrubsteppe
Restoration and Resilience
Initiative (WSRRI)



Conserving Nature's Stage
The Nature Conservancy



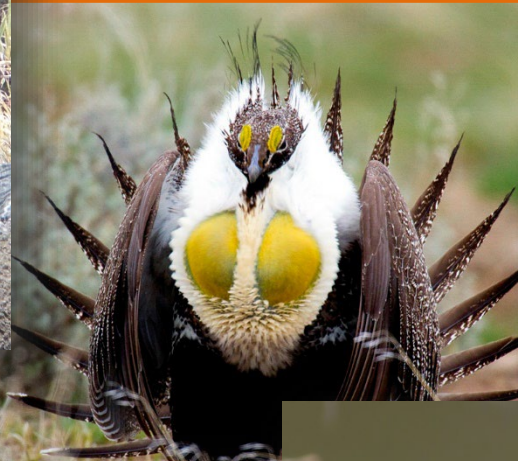
Arid
Lands
Initiative

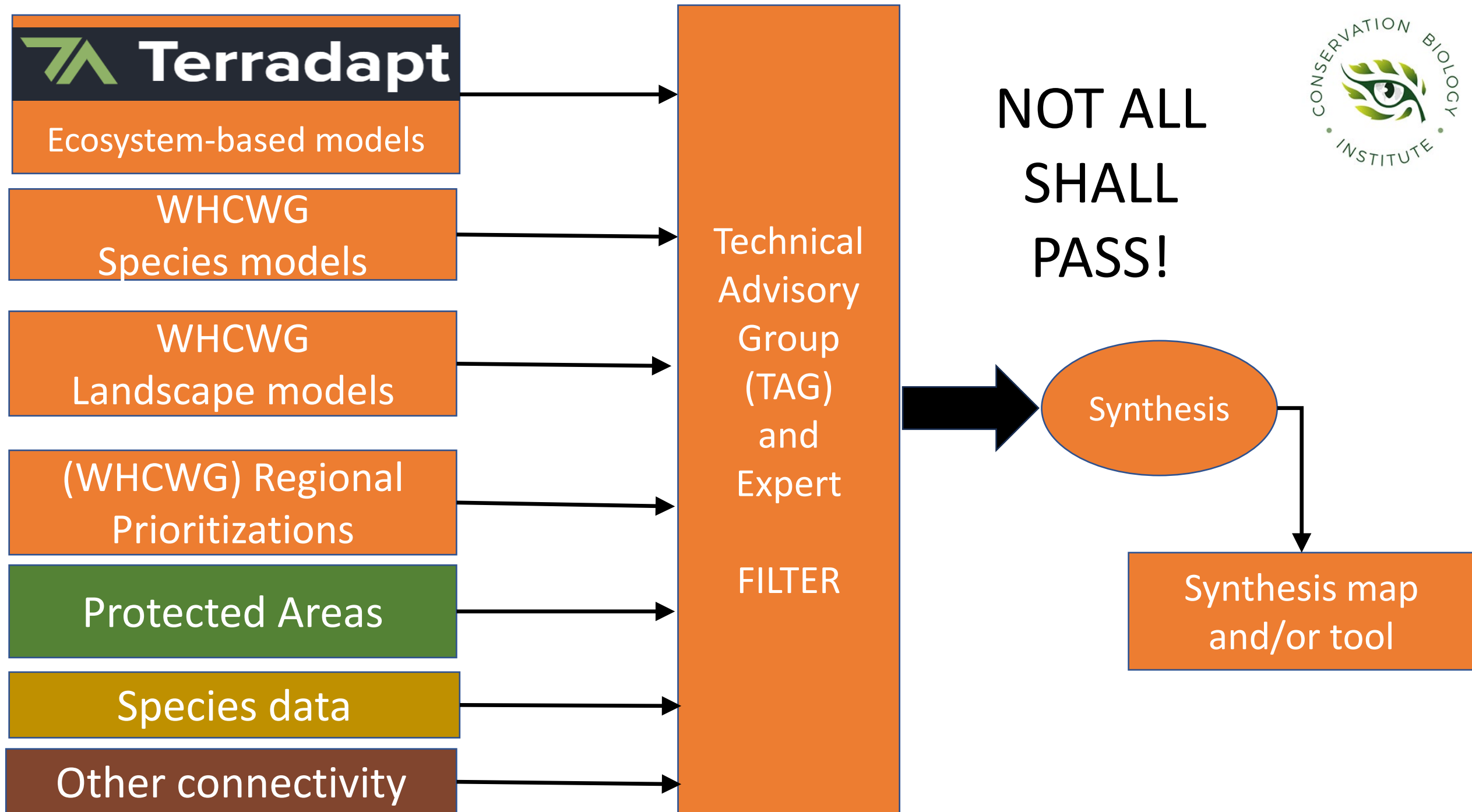


Ecosystem connectivity



Species of Interest

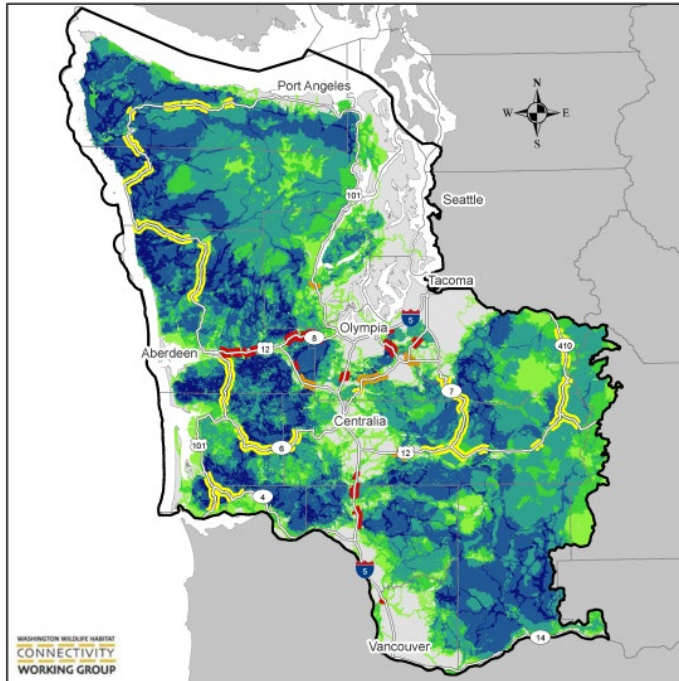




Special regions

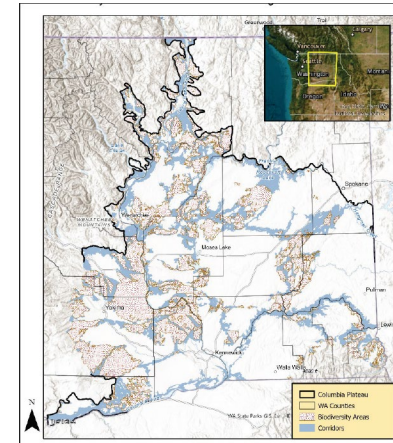


Cascades to Coast

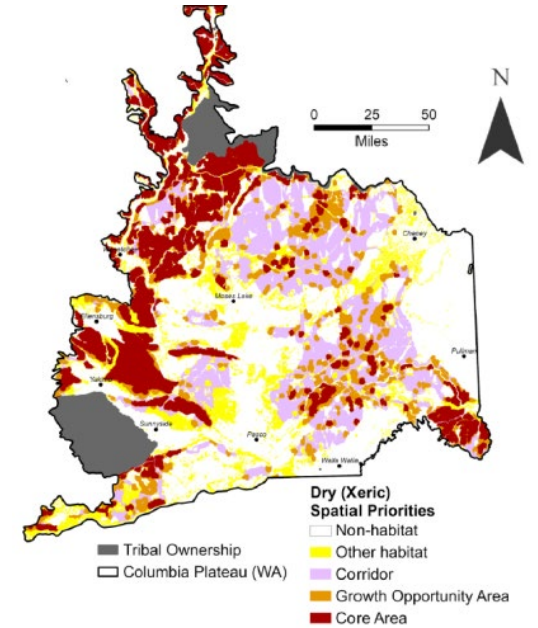
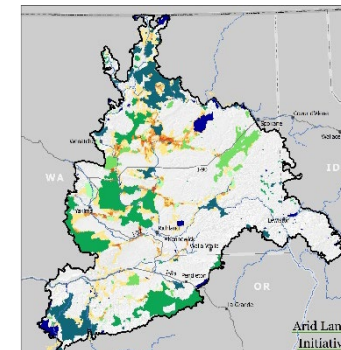


Columbia plateau

PHS
Biodiversity
Areas and
Corridors



Arid
Lands
Initiative



Washington Shrubsteppe
Restoration and Resilience
Initiative (WSRRI)

Providing spatial data and technical assistance to help planners *designate* and *protect* critical fish and wildlife habitat including

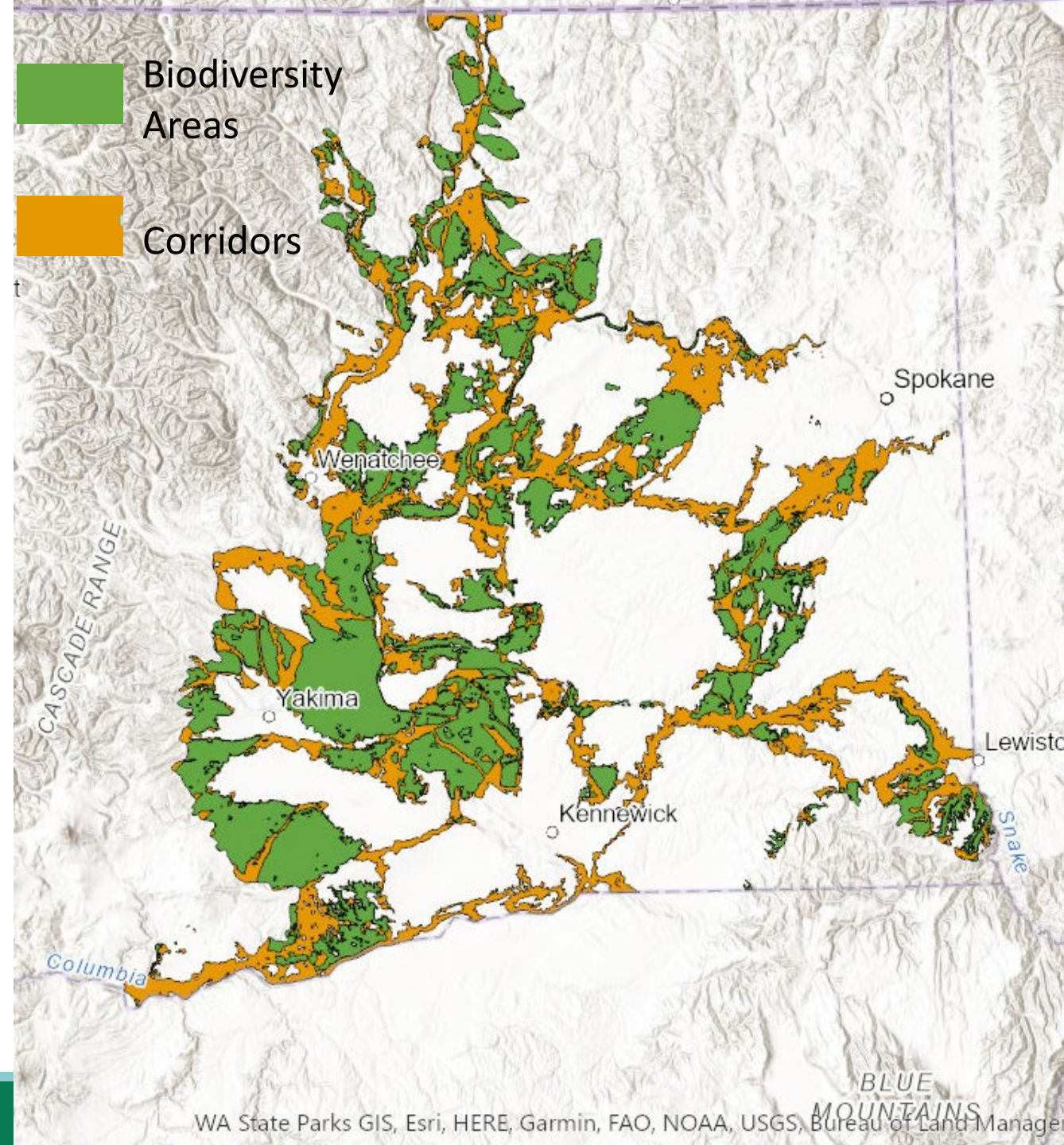
Biodiversity Areas and Corridors



PHS Columbia Plateau Biodiversity Areas and Corridors

Example intended uses:

- Comprehensive planning
- Inform zoning decisions
- Urban growth boundary changes
- Siting for major projects (e.g., solar and wind)

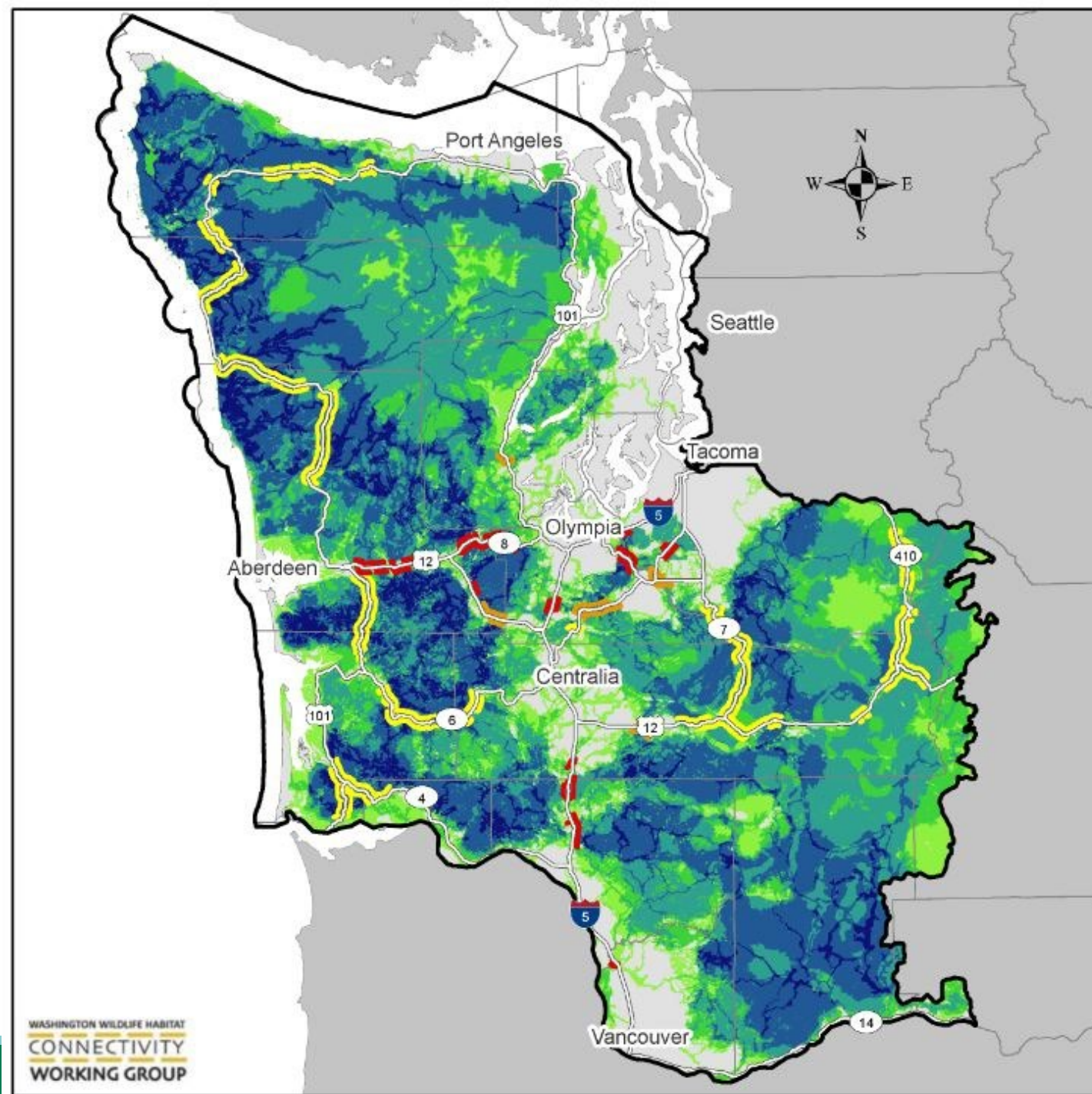


Next...

PHS management
recommendations

and

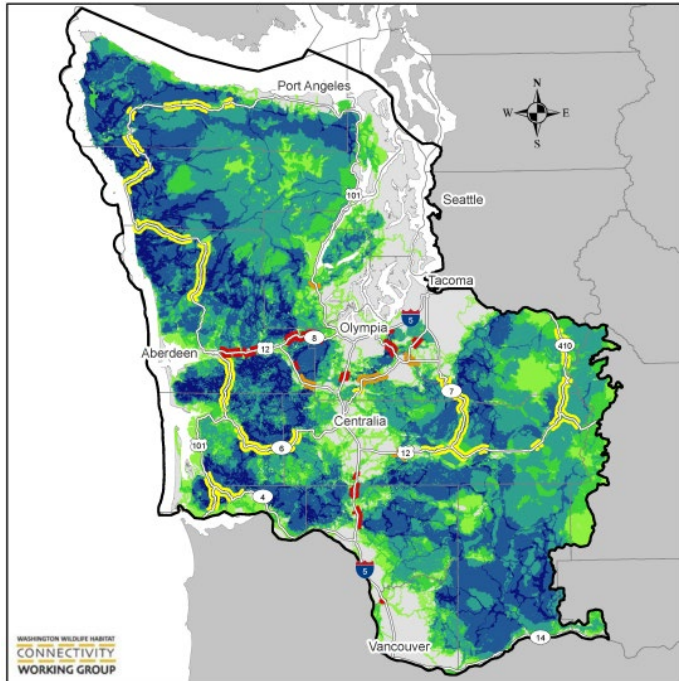
PHS
Southwest Washington
Biodiversity Areas and
Corridors



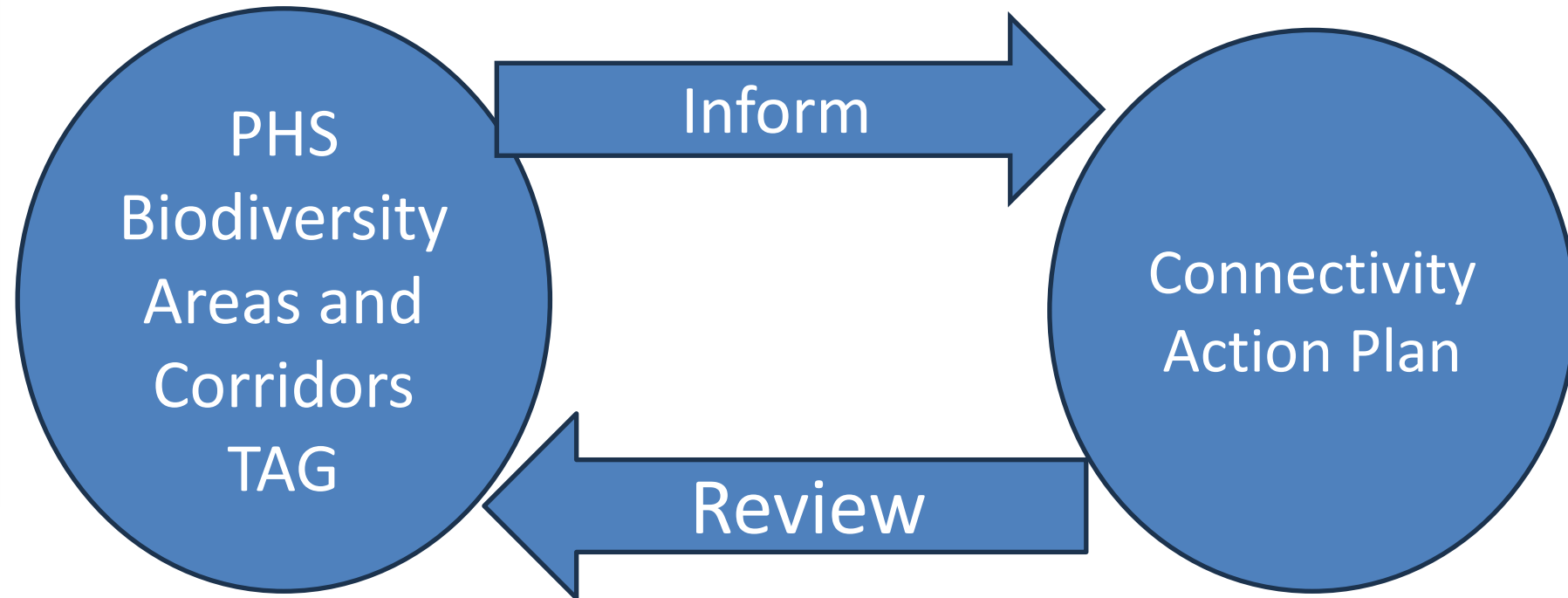
Special regions



Cascades to Coast



- Next target for PHS Biodiversity Areas and Corridors.
- TAG met Nov 23 – Mar 24



Spatial synthesis



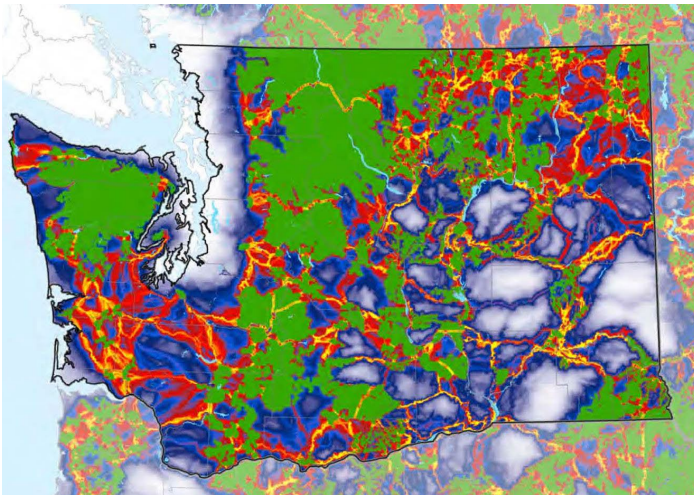
First draft by August 31, 2024

- Synthesize existing connectivity maps, data, and priorities.
- Identify list of high priority/ 'no-regrets' locations.
- Locations will serve as the near-term project priorities for funding proposals.

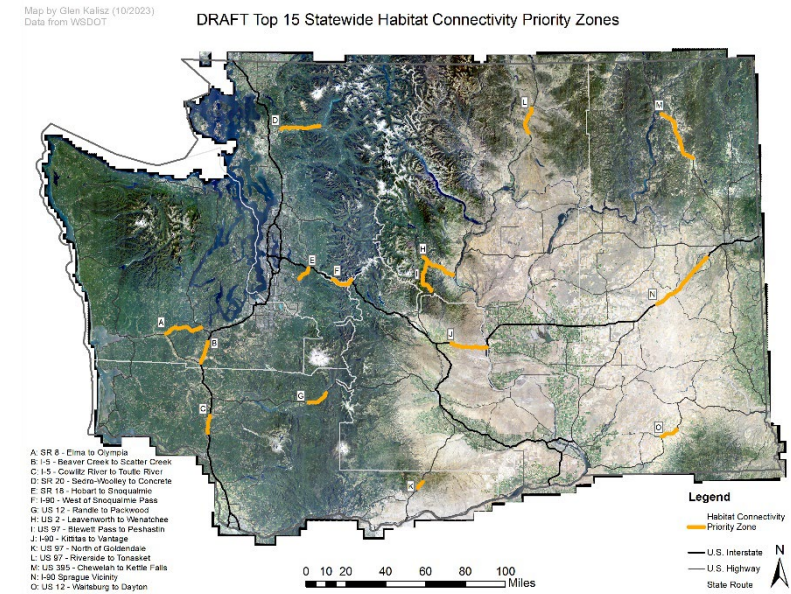


Priority Locations

Small number of targeted priority areas for immediate action



Lots more happens here!!



Collaborative Process

Implementation Advisory Group – Practitioners

- What connectivity work do you do?
- What are limitations of existing data we can improve on?
- How do we prioritize locations?
- What data format or displays do you need?

1:1 Meetings with Tribes



Strategies

What needs to happen at priority locations?

- Wildlife crossings
- Land acquisition/easements
- Habitat restoration and management
- Land use planning

What resources are available to help?

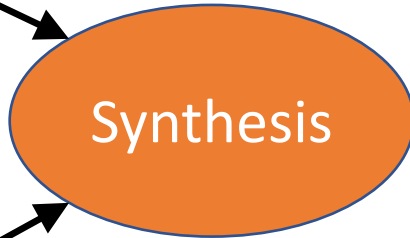


Chase Gunnell, CNW





Ecosystem-based models



Existing data



Synthesis map and/or tool

Technical Advisory Group (TAG)

Implementation Advisory Group (IAG)

Priority locations

Strategies and tools for implementation

Action Plan priorities

Final Action Plan

Timeline

| Contract | Task/Deliverable | 2024 | | | | | | | | | | | | 2025 | | | | | |
|--------------|----------------------------|------|-----|-----|-----|-----|-----|-----|-----|-----|-----|-----|-----|------|-----|-----|-----|-----|-----|
| | | Jan | Feb | Mar | Apr | May | Jun | Jul | Aug | Sep | Oct | Nov | Dec | Jan | Feb | Mar | Apr | May | Jun |
| Action Plan | Kick-off Meeting | * | | | | | | | | | | | | | | | | | |
| Spatial data | Spatial data co-production | | | | | | * | * | | | | | | | | | | | |
| Spatial data | Feedback on products | | | | | | | | | | | | | | | | | | |
| Spatial data | Revise products | | | | | | | | | | | | * | | | | | | |
| Action Plan | Action Plan Development | | | | | | | | | | | | * | | | | | | |
| Action Plan | Final comment period | | | | | | | | | | | | | | | | | | |
| Action Plan | Finalize report | | | | | | | | | | | | | | | | | | * |

*Draft deliverable due dates



Questions?



