

Sagelands Heritage Program

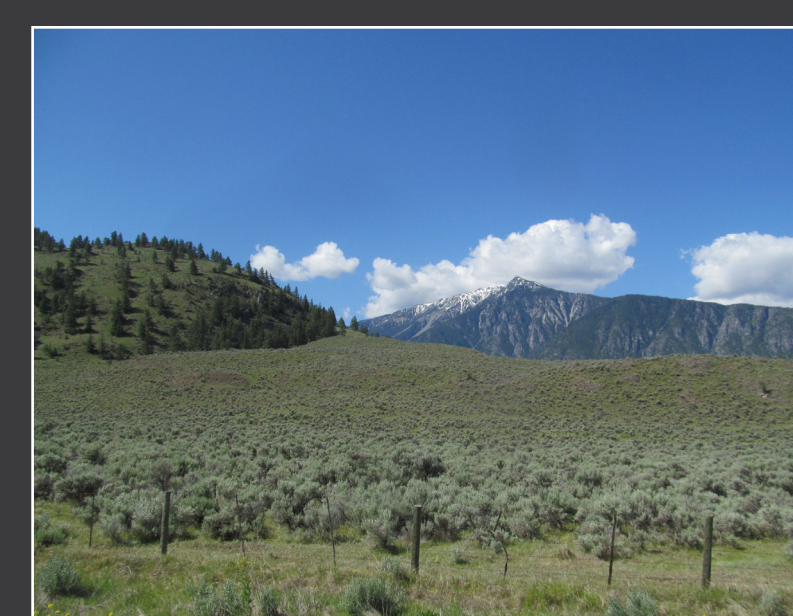
Restoring and connecting Inland Northwest shrub-steppe for wildlife and people

1 Okanagan Mountain to Kalamalka Lake



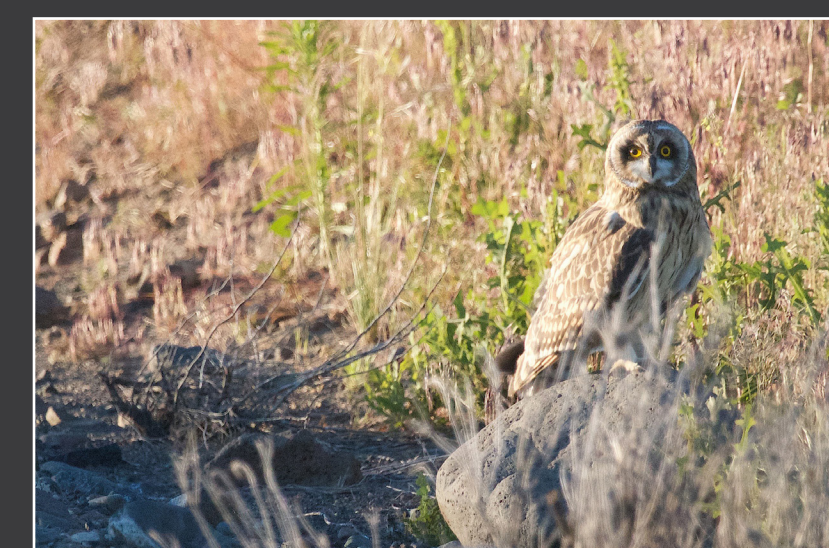
This narrow band of grasslands in a distinct valley east of the town of Kelowna, British Columbia is a funnel for north-south wildlife movement as well as critical habitat for badgers. Development and conversion to agriculture threaten this linkage.

2 Transboundary Okanogan Valley



An area important for multiple species including bighorn sheep that widens as it extends south. A proposed Canadian national park reserve would protect core habitat, while the Sinlahekin Wildlife Area and state natural areas conserve wildlands on the U.S. side.

3 Working for Wildlife Initiative



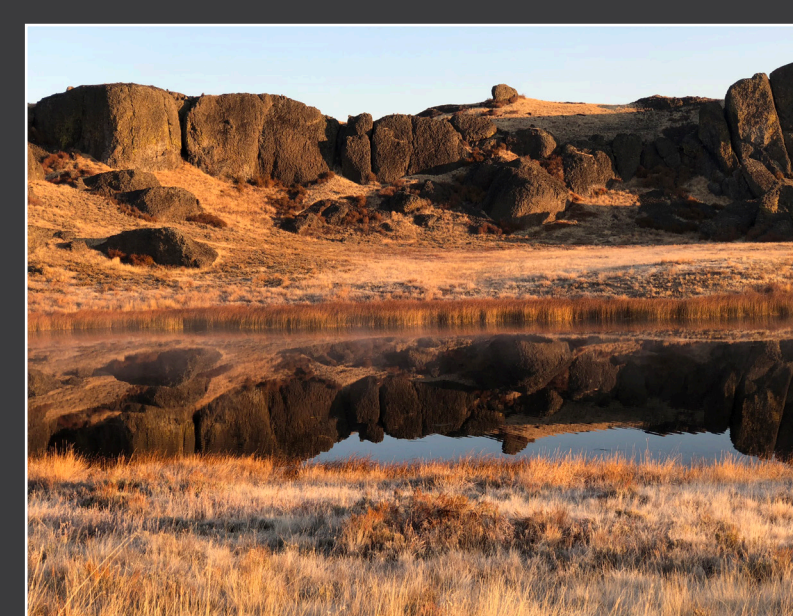
A narrow linkage through the Okanogan Valley between the North Cascades to the west and the Colville Reservation and Kettle Range to the east. Partners are engaged in conservation easements, wildlife crossings, road restoration and maintaining working lands to support sharp-tailed grouse and the largest mule deer herd in the state.

4 Dyer Hill



South of the Columbia River is the high plateau of mixed farmland and shrub-steppe habitat of Dyer Hill, where patches of sharp-tailed and sage grouse habitat vital to these species survival in Washington need to be maintained, restored and expanded.

5 Sagebrush Flats to Big Bend



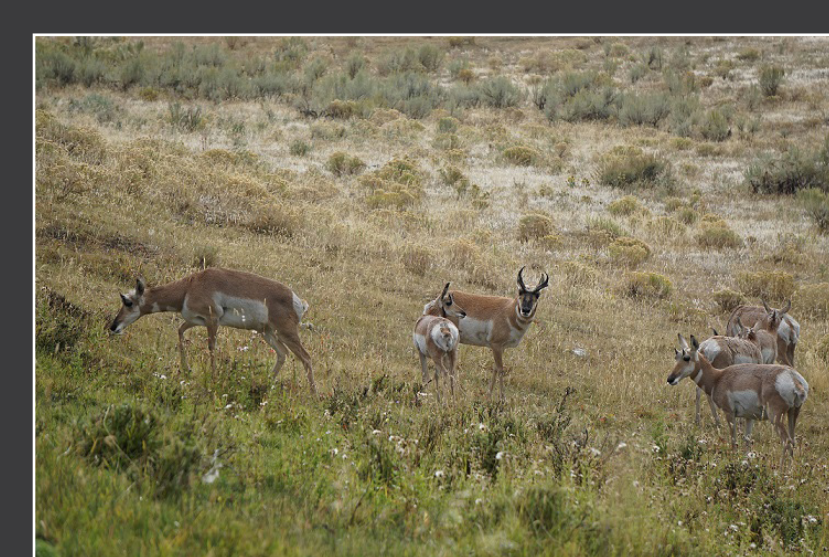
This area has a high number of focal species including mule deer, pronghorn antelope, pygmy rabbits, sage and sharp-tailed grouse and horny toads, and is critical to the integrity of regional habitat linkages. A mix of native habitat, agricultural lands and wetlands with a need for protection, restoration and connections.

6 Colockum to Yakima Firing Center

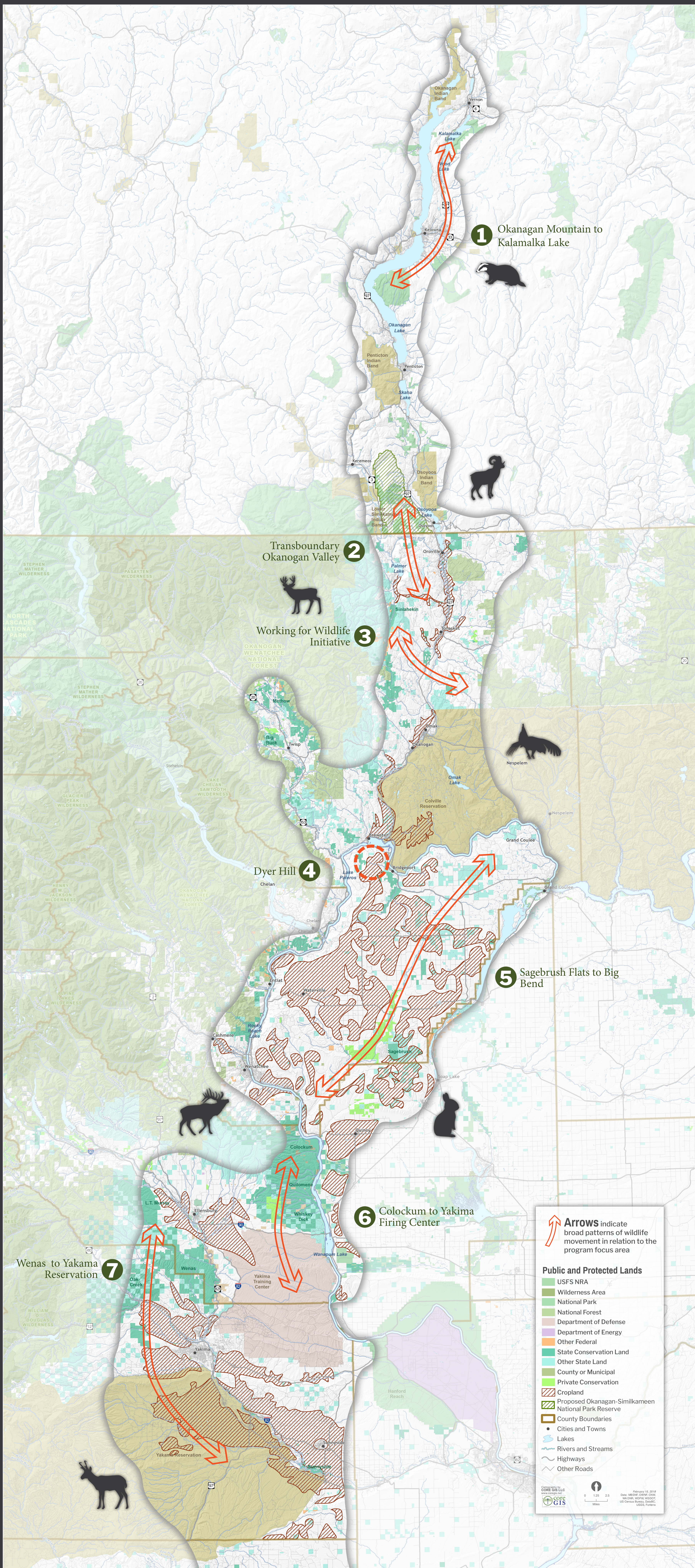


State wildlife areas and the Yakima Training Center serve as critical winter and calving habitat for elk and mule deer while providing excellent connecting habitat for sage grouse. This linkage is bisected by I-90, a formidable barrier to many wildlife species.

7 Wenas to Yakama Reservation



The Yakama Nation and key state wildlife areas form a vast expanse of shrub-steppe habitat that is under pressure from increasing wildfires, feral horses and development.



For more information, visit
conservationnw.org/sagelands

DISCLAIMER: Lorem ipsum dolor sit amet, consectetur adipiscing elit. Praesent euismod ipsum non molestie efficitur. Pellentesque non neque vel ante elit, tunc sollicitudin quis et augue. Integer metus justo, aliquet quis tempus ut, mattis eu neque. Vestibulum non orn volutpat; dapibus mauris sed, tempus odio. In sit at lectina auctor, sit ante ultrices volut. Mauris sit ante Incidunt orn, et volutpat auctor. Sed felis per, efficitur non tellus sed, nonnas viverra. Odio. Ut vitae massa laoreet. Quam aliquet per orn cibus volutpat. Nonna orn metus lobortis. Pellentesque lobortis morbi tristique ornentur et nunc et molestiae. Quam orn orn orn.